



■ August 2022 Update

■ Introduction

South Meath Solar Project not only has the capacity to deliver climate action, but also to bring very real and tangible benefits to the local area. The project was granted planning permission in 2018 and was bought by Statkraft from Lightsource in 2020.

Construction works began on site at the end of 2021, and the project is expected to be fully operational in Q3 2023. Construction began in late 2021 and the project is expected to be fully operational in Q3 2023.

■ Project Overview

South Meath Solar is Statkraft's second major solar project in Ireland. Located near Blundelstown, South Meath Solar is a 80.5MWp project that will have the capacity to provide a significant amount of clean, green electricity to our national grid at a time when it's needed the most. The solar project was Statkraft's fourth renewable energy project to go into construction since 2021. It is being developed, funded, and built by Statkraft, who will also be managing the operational aspects of the solar farm once constructed.

The sustainability of the project is an important aspect of its development. A comprehensive Biodiversity Management Plan was submitted with the consent planning application, which includes installing bird and bat boxes, sowing species-rich grassland, sowing wildflower meadows, as well as other measures. Native hedgerow, tree planting and bunding banks will also improve screening from the surrounding areas.

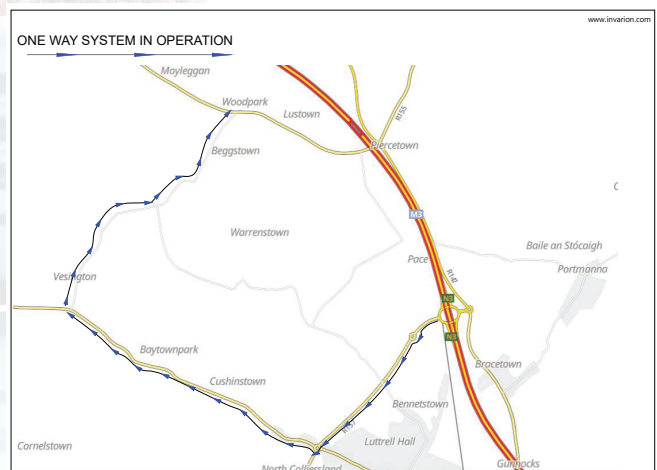
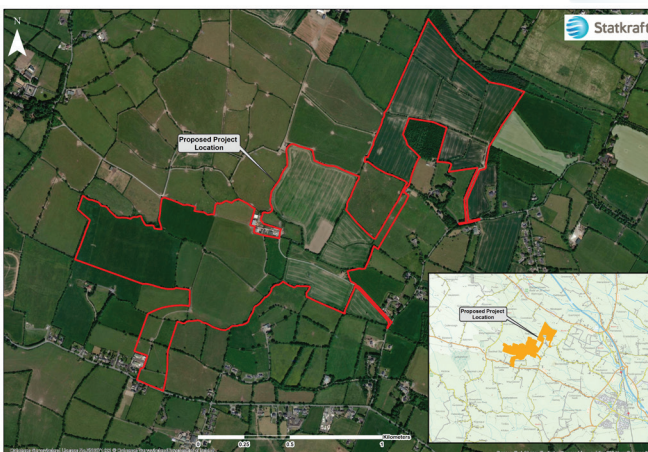
■ Current Stage and Upcoming Works

From previous engagements that has been carried out on this project, we know that the construction traffic route was a concern raised by local residents. Therefore, we felt it was very important to outline what will be happening in the locality over the coming weeks.

Phase 2 works will start the week commencing 22nd August. The Project Supervisor for the Construction Stage (PSCS) is Suir Engineering. They will commence enabling works with the formation of access roads and the establishment of offsite compounds in advance of mechanical installation works, which will commence in October. Transportation vehicles, including stone deliveries and haulage, will be in use. Every effort will be made to facilitate these vehicles as early in the day as possible and to minimise disruption on residents.

Access to and from the site will be via a one-way system. Delivery vehicles will leave M3 at Junction 5 (Dunboyne) and travel along the R157 before turning right onto the R156. From here the vehicles will turn onto the L6222 where they will travel approximately 0.5km to site. Both site entrances will be a left-hand turn from the L6222. On exit from the site delivery vehicles will be prompted to turn left only when leaving site and travel north along the L6222 to avoid any conflict on this slightly narrow road. A map of the proposed route to site entrance 1 and 2 is attached below.

All traffic movements will be carried out between the hours of 08.00 to 18.00 Monday to Friday and 08.00 to 13.00 Saturdays.



■ About Statkraft

Statkraft is Europe's largest renewable energy producer. It has been making clean energy for over a century. At Statkraft Ireland we believe that a better, cleaner and more sustainable world is possible to achieve and that by working together, we can avoid the worst impacts of climate change.

In Ireland, Statkraft develops, owns and operates renewable energy and is at the forefront of producing a diverse range of renewable technologies, including onshore wind, solar, offshore wind and grid services.



■ Dedicated Project Website and Business Portal

There is a dedicated project website in place – www.southmeathsolar.ie, which also includes a Business Portal to allow local businesses to submit their interest in working with the project. All information and updates relevant to the project will be posted on the website so please do have a look at the information provided.



■ Benefits of Solar Power

Solar power is a clean, abundant source of energy and has many benefits.

The following table outlines some of the areas where this proposal can deliver real and significant local and national opportunities.

Local Opportunities	National Benefits
Supports local biodiversity and wildlife	Energy security
Community Benefit Fund of for the local area supporting: <ul style="list-style-type: none"> • Home energy efficiency schemes • Environmental projects • Social initiatives 	Green power for Irish homes
	Carbon reduction
	Climate action being delivered
Job creation	Reduced reliance on fossil fuels
Improvements to local facilities	Improved air quality
Support local education	Rates to Local Authorities
Support a sustainable local community	Affordable electricity - from a sustainable resource

Engagement with the local community is a vital part of our construction process.

We thank you for your cooperation and understanding as we carry out these works.

If you have any queries on the project, or the proposed works, please contact us on the details below.

Here at Statkraft we take your privacy seriously and we treat your information with respect. For our general privacy policy please log onto <https://www.statkraft.com/privacy-statement/> or direct any specific questions to privacy@statkraft.com

■ Contact Us

Phone: 01 211 8977

E: enquiries@southmeathsolar.ie

www.southmeathsolar.ie

