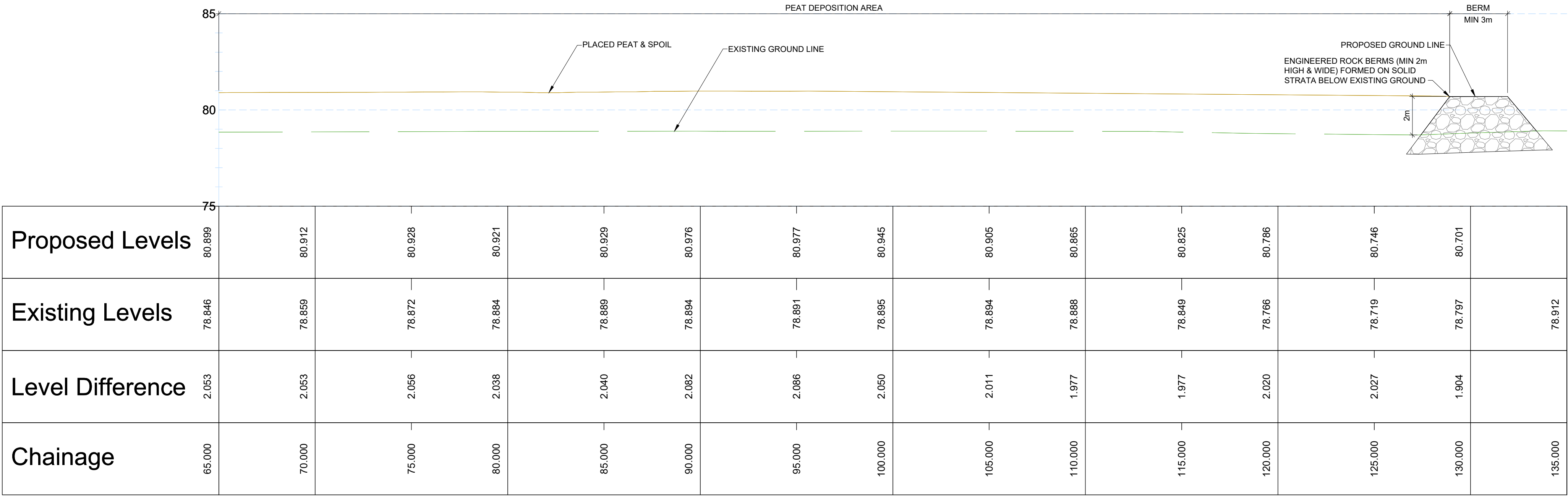


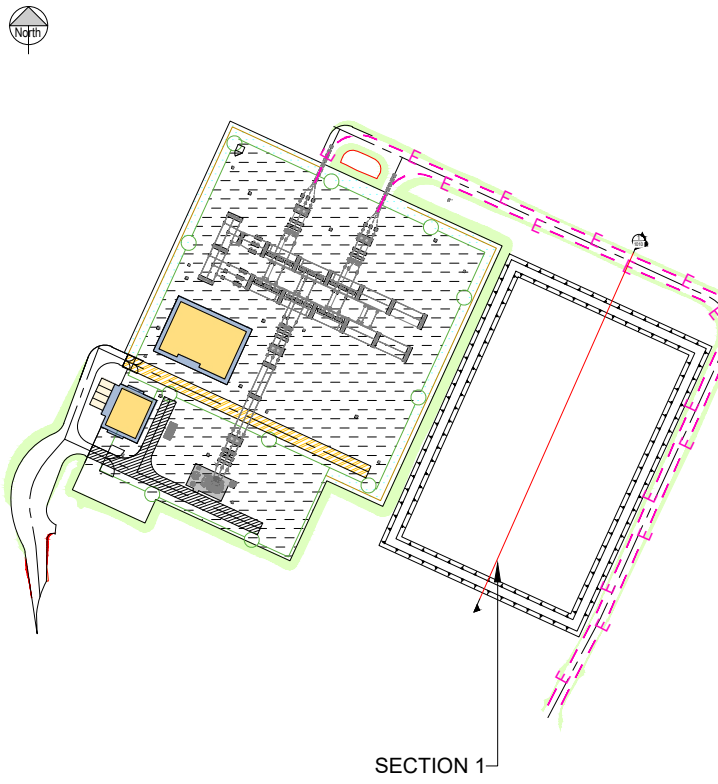
SECTION 1 PART 1
CH0.0M TO 65.0M
SCALE H 1:150 , V 1:150



SECTION 1 PART 2
CH65.0M TO 135.0M
SCALE H 1:150 , V 1:150

- NOTE:
1. INDICATIVE DESIGN ONLY, SUBJECT TO DETAILED DESIGN POST PLANNING.
 2. ALL DRAWINGS ARE TO BE READ IN CONJUNCTION WITH ALL RELEVANT SPECIFICATIONS, BILLS OF QUANTITIES, ARCHITECTURAL, SERVICES AND ENGINEERING DRAWINGS.
 3. ANY DISCREPANCIES BETWEEN THESE DOCUMENTS SHALL BE BROUGHT TO THE ATTENTION OF THE ENGINEER.
 4. ALL DIMENSIONS ARE IN METRES, UNLESS NOTED OTHERWISE.
 5. ALL LEVELS ARE IN METRES RELATED TO ORDNANCE DATUM.
 6. DRAWINGS ARE NOT TO BE SCALED.

DREHID - KEY PLAN:



LEGEND:

- EXISTING GROUND LEVEL
- PLACED PEAT AND SPOIL
- LEVEL LINES

P05	26.05.2025	ISSUED FOR INFORMATION	SR	IB
P04	22.05.2025	ISSUED FOR INFORMATION	SR	IB
P03	23.10.2024	ISSUED FOR INFORMATION	PN	IB
P02	03.09.2024	ISSUED FOR INFORMATION	PN	IB
P01	18.06.2024	ISSUED FOR INFORMATION	PN	IB
REV	DATE	DESCRIPTION	BY	APP

PROJECT:

DREHID SUBSTATION

TITLE:

PEAT DEPOSITION SECTION (SHEET 1 OF 2)

CLIENT:

NORTH KILDARE WF LTD



DRAWN:	P.N.	CHECKED:	D.C.	APPROVED:	I.B.
PROJECT NUMBER:	23727	DATE:	JUN 2024	SCALE @ A1:	1:150
STATUS DESCRIPTION					STATUS:
FOR INFORMATION					S2

DRAWING NUMBER:	23727 - MWP -SS-ZZ-DR-C- 1010	REV:	P05
-----------------	-------------------------------	------	-----