

Proposed Coumnagappul Wind Farm Project

Project Newsletter No. 5 – October 2023

EMPower



Introduction

This is the fifth Newsletter distributed for the proposed Coumnagappul wind farm project. The proposed project has now reached the point where the design team are ready to submit the project's planning application to An Bord Pleanála. The planning submission will include the project's Environmental Impact Assessment Report and, pending final reviews, will be submitted over the coming weeks. Site information notices will be erected around the projects Study Area and all the planning documents and the Environmental Impact Assessment Report will be accessible from the project website once they have been received by An Bord Pleanála. This Newsletter gives an overview of the proposed project's final design prior to the proposal being submitted to An Bord Pleanála.

To supplement the proposed project's design process, we have also compiled a dedicated online Community Consultation Exhibition. This online Community Consultation Exhibition is available to view at www.innovision.ie/Coumnagappul and includes added design detail on topics such as landscape and visuals, transport and delivery routes and layout maps with added functionality. There is also a very useful Photomontage viewer available in this online Community Consultation Exhibition where you will be able to see images of the proposed project as it would look if built out.

If there are any areas of the proposed project you wish to discuss further, please contact the project team using the contact details on the back page of this Newsletter or from the contact form on the project website www.coumnagappulwindfarm.ie

All the previous community project newsletters, including design webinar material and questions posed, are available to view and download from the dedicated project website www.coumnagappulwindfarm.ie

The Proposed Project

A 10-year planning permission and 40-year operational life, from the date of commissioning of the entire wind farm, is being sought for the construction of 10 wind turbines, permanent met mast, on-site 110kV substation and all necessary ancillary works. The Coumnagappul wind farm project proposal comprises the following:

- 10 individual wind turbines with a blade tip height of 185 meters, a hub height of 104 meters and a rotor diameter of 162 meters as well as all associated foundations and hard standing areas;
- An onsite 110kV substation as well as all associated works connecting the proposed wind farm to the national electricity grid network at the existing 110kV substation near Killadangan, just north of Dungarvan;
- All underground cabling required to connect the on-site substation to each wind turbine;
- Upgrading of existing site access tracks and construction of new site access tracks and entrance as required;
- Habitat and Biodiversity Enhancement measures;
- On-site borrow pits;
- 1 on-site permanent met mast;
- A temporary construction compound;
- Component delivery route assessment from Waterford Port via the N29, N25, N72, R672 and L5119.

Project Consultation

The project team have hosted Coumnagappul project interactive design webinars as well as project information open evenings during our public consultation program to date. Our project webinars detailed different elements of the project's design at each important milestone of the design process. You can view recordings of these webinars as well as information discussed at our project open evenings on the project website www.coumnagappulwindfarm.ie

All the previous project newsletters, communications and FAQs are available to view and download from the dedicated project's website. The projects online Community Consultation Exhibition is also accessible from the project website at www.coumnagappulwindfarm.ie

Who Are EMPower

EMPower is an Irish renewable energy developer with over 800 MW in development in Europe and Africa. Our senior management team comprises five Irish professionals with a combined 95 years' experience delivering projects from conception to operation across five continents. EMPower's headquarters is in Dublin.

EMPower is owned by GGE Ireland Limited, Wind Power Invest A/S and EMP Holdings Limited.

Our vision is to provide low carbon, ecologically non-invasive, affordable energy to facilitate Ireland's expanding economy and sustainable energy targets.

95 Years

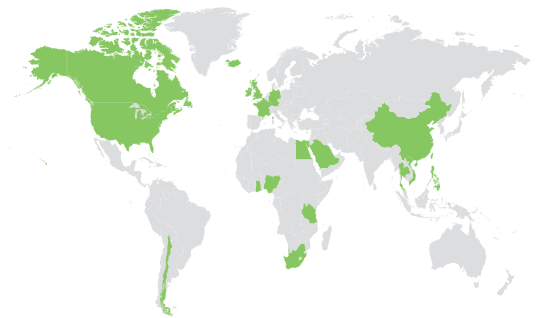
Combined Experience of EMPower Management Team in Renewable Energy

800 MW+

Wind Energy Capacity Currently Under Development by EMPower

5 Continents

Combined Geographical Experience of EMPower Team in Renewable Energy



Grid Connection

The proposed projects grid connection studies have completed their final stages of design. The connection strategy if the proposed Coumnaagappul project is consented, would connect to the Dungarvan 110kv substation. This route has emerged as the most feasible option and will comprise of approximately 20km of underground cable which runs south to Dungarvan substation just north of Dungarvan town near Killadangan. The final grid connection methodology and the exact location of the underground grid connection within the proposed site boundary will be finalized prior to construction and in consultation with Waterford City and County Council, ESB and Eirgrid having regard to all the environmental protection measures outlined in the Environmental Impact assessment Report.

This potential route can be seen in greater detail on the grid map shown on page 5 of this newsletter. For additional location context this route is proposed to exit the project study area to the west onto the local road and then travel 1.1km south, turning west at Sweeps Cross Roads, Continuing west from there for 800m to Bryans Cross roads and turning south onto the L5111 for approximately 2.2km to Forge Cross Roads.

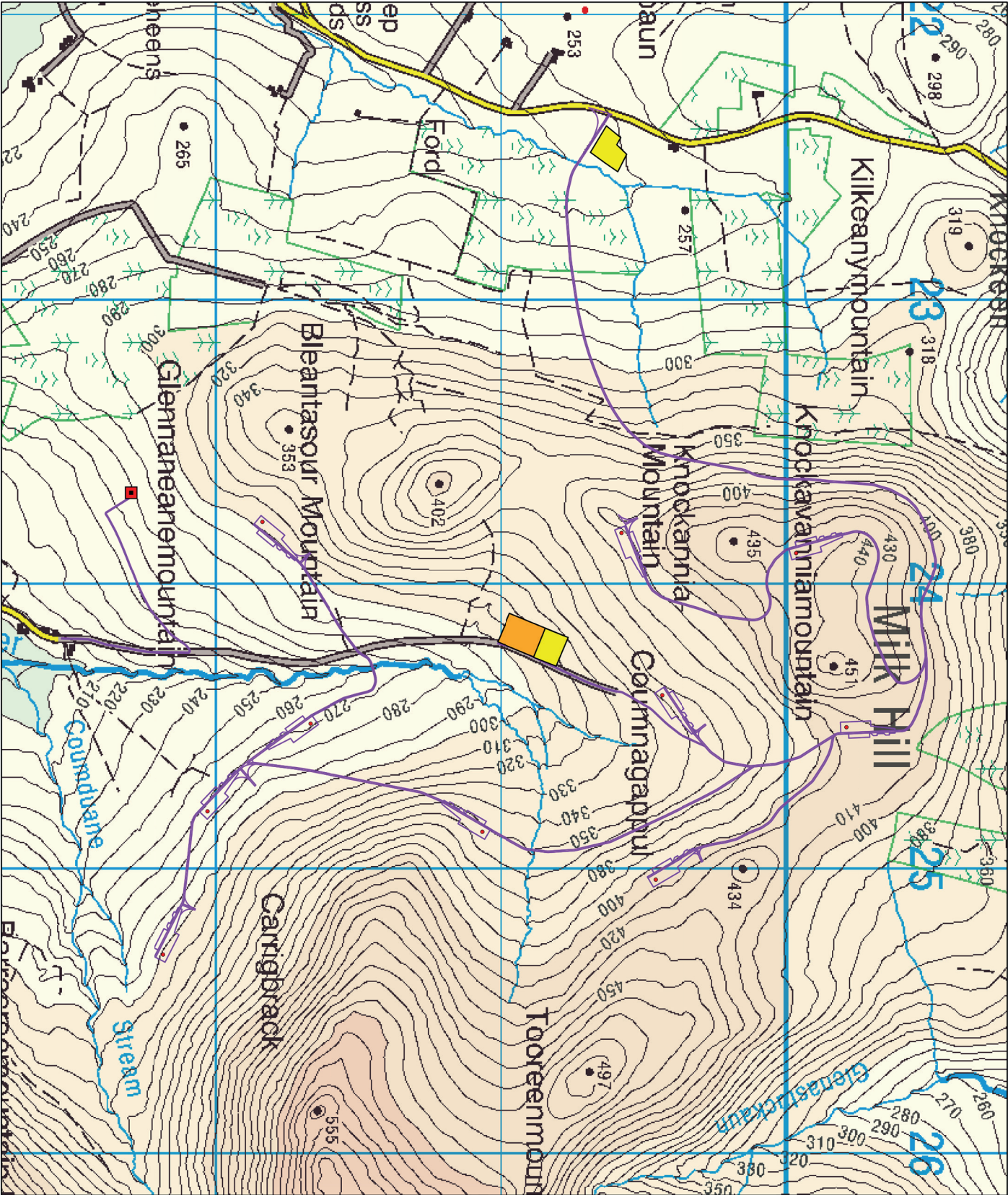
From there the underground cable will turn east to Murphy's Cross Roads and then south to Beary's Cross, crossing over the R672 onto the local 1041 road for another 1km. At this point the proposed route turns south and heads back onto the R672 via Garryduff and the local 5068 road. Here the proposed route continues south again on the R672 for 4km before reaching the N72 at the Master McGrath monument. The cable will then run east for 1.3km before entering the Dungarvan substation at Killadangan.



Turbine Component Transport Delivery

The turbine component delivery route most feasible for the proposed Coumnaagappul wind farm project can be seen on the drawing on page 5 of this newsletter. The turbine components will enter through Waterford City Port (Bellview). Transport vehicles would exit Waterford City port and travel along the N29 and then onto the N25 at the Luffany roundabout, travelling west. Transport will continue west onto the N72 and northbound on the R672, departing the R672 near Touraneena and onto the L5113. Continuing north-east on the L5113 before heading north at Forge Cross Roads towards Byran's Cross Roads, before entering the project area from the western side.

The delivery of turbine components will be carried out during off-peak times by a specialist heavy haulage transport company to minimise impacts on existing road networks. There will be the need for some temporary roadway enhancement and removal of street furniture if the project is granted a consent, but all this will be done in conjunction with Waterford City and County Council, Transport Infrastructure Ireland and An Garda Síochána during times of heavy goods movements.



Project:
**Proposed Coumnagappul
Wind Farm
Co. Waterford**

Title:
Design Iteration 3b

- Key:
- Indicative Turbine Locations
 - Indicative Civil Layout
 - Indicative Substation Location
 - Indicative Construction
 - Compound Location
 - Indicative Permanent Wet Mast Location

Progress Print - Subject to change.

Scale: 1:12,500

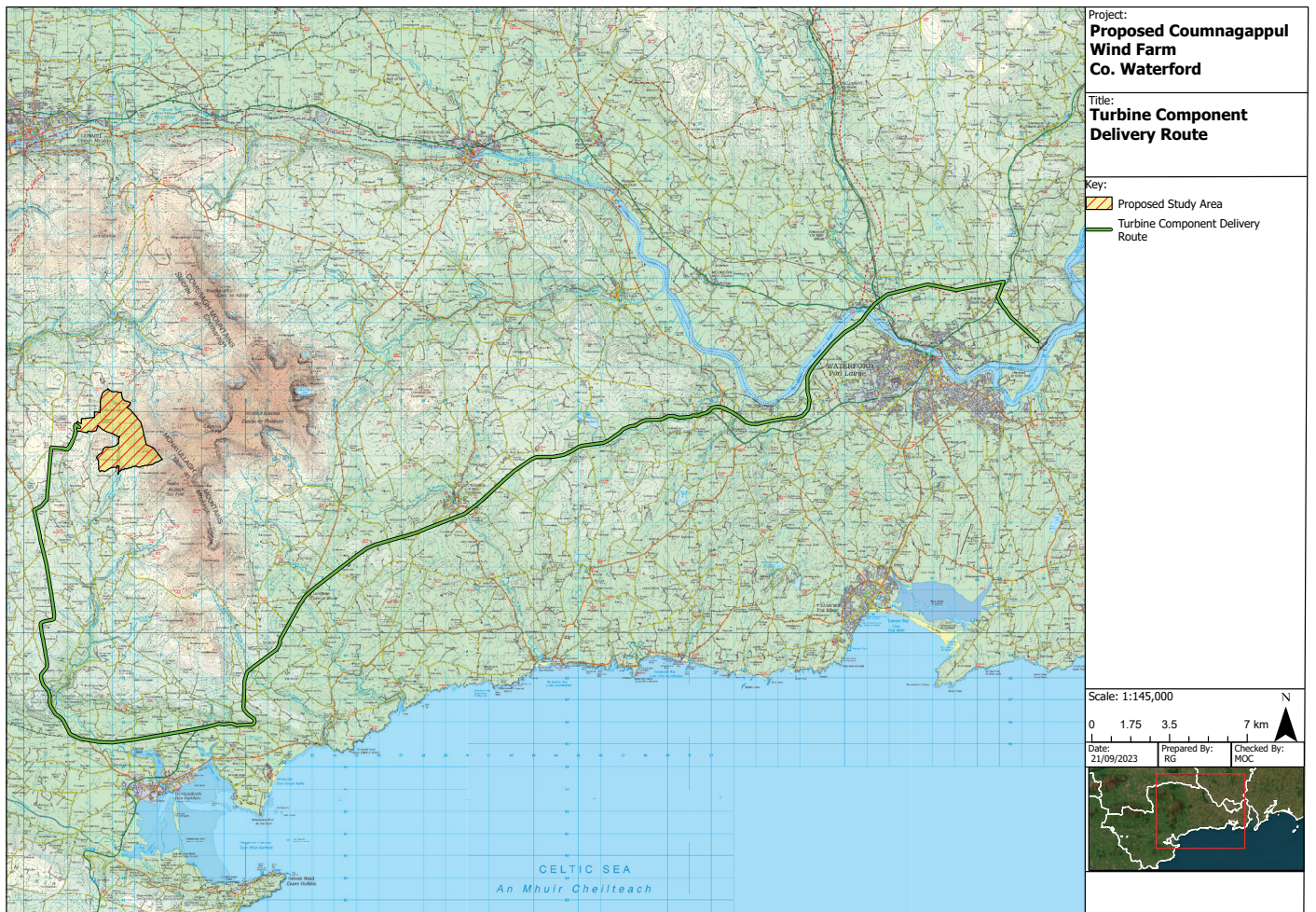
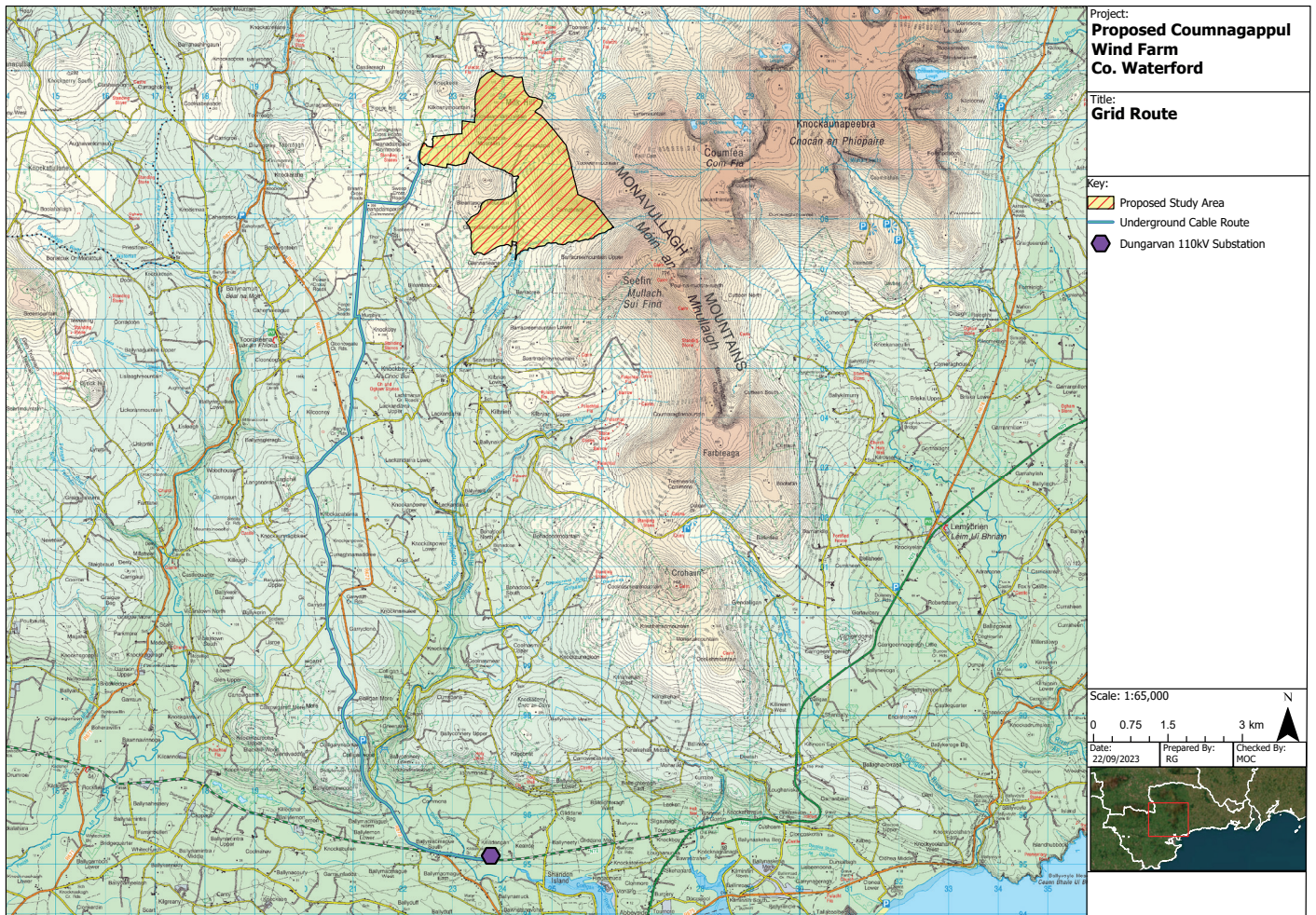
0 0.13 0.25 0.5 km

Date: 07/04/2023

Prepared By: RG

Checked By: MOC





The Planning Process

The projects Environmental Impact Assessment Report (EIAR) will accompany the planning submission. All the planning documents and the EIAR will be available for public comment during the planning review process prior to An Bord Pleanála making a judgement on the application. Cork based consultants Fehily Timoney and Co. are compiling the Coumnagappul EIAR with input from expert specialist consultants.

Every project's EIAR is tailored to suit each project's particular aspects but the content of the Coumnagappul EIAR largely aligns with the following chapter structure:

- Chapter 1 Introduction;
- Chapter 2 Description of Proposed Development;
- Chapter 3 Site Selection and Alternatives;
- Chapter 4 Policy;
- Chapter 5 EIA Scoping, Consultation and Key Issues;
- Chapter 6 Air and Climate Change;
- Chapter 7 Noise and Vibration;
- Chapter 8 Biodiversity and Ornithology;
- Chapter 9 Land, Soils and Geology;
- Chapter 10 Hydrology and Water Quality;
- Chapter 11 Population & Human Health & Material Assets;
- Chapter 12 Shadow Flicker;
- Chapter 13 Traffic and Transportation;
- Chapter 14 Archaeology, Architectural and Cultural Heritage;
- Chapter 15 Landscape and Visual Impact;
- Chapter 16 Telecommunications and Aviation;
- Chapter 17 Interactions of the Foregoing.

During the project design and environmental assessment, consultation is carried out with Waterford City and County Council as well as numerous other statutory and non-statutory consultees, to discuss the project proposal during its design process. The planning application will be supported by the above-mentioned Environmental Impact Assessment Report (EIAR) and a Natura Impact Statement (NIS).

Engagement with local residents and interested stakeholders will continue after the project is submitted to An Bord Pleanála. Our dedicated online Community Consultation Exhibition is currently available at www.innovision.ie/Coumnagappul and our dedicated project website will also be continuously updated with relevant project information.

The project is almost ready to be submitted to An Bord Pleanála for assessment. It is anticipated that the planning application will be submitted in early October 2023.

The Coumnagappul wind farm planning application will include the following;

- Cover Letter to An Bord Pleanála;
- Planning Application Form;
- Letter(s) of Consent;
- Site Notice;
- Newspaper Notices;
- Pre-Application Consultation;
- Planning drawings and drawing schedule;
- EIA Portal Confirmation Notice;
- Natura Impact Statement.

Notification of the intention to submit a planning application supported by an EIAR will also be sent to the Department of Housing, Planning and Local Government's EIAR portal and once the application is validated by the Department, this confirmation will also be included with the planning submission.

All documents and drawings will be available for public viewing from the Coumnagappul project website at www.coumnagappulwindfarm.ie once they have been validated by An Bord Pleanála.

Details on how to make a public submission or observation on a strategic infrastructure development application (SID) under An Bord Pleanála may be found at:

<https://www.pleanala.ie/en-ie/strategic-infrastructure-development-guide/sid-applications>

Proposed Project Schedule

Proposed Coumnagappul Project Schedule	2019				2020				2021				2022				2023				2024				2025				2026				2027				2028																																															
	Q1	Q2	Q3	Q4	Q1	Q2	Q3	Q4	Q1	Q2	Q3	Q4	Q1	Q2	Q3	Q4	Q1	Q2	Q3	Q4	Q1	Q2	Q3	Q4	Q1	Q2	Q3	Q4	Q1	Q2	Q3	Q4	Q1	Q2	Q3	Q4																																																
Ornithology Studies																																																																																				
Planning Consultant (EIAR)																																																																																				
Stakeholder Consultation																																																																																				
Wind Measurement (Met Mast)																																																																																				
Planning Judgement																																																																																				
Grid Connection Application																																																																																				
Detailed Project Design																																																																																				
Project Construction																																																																																				
Project Operational																																																																																				

Note: Q1, Q2, Q3 and Q4 in the above schedule represent yearly quarters. For example, Q1 represent the first quarter of that year

Community Benefit

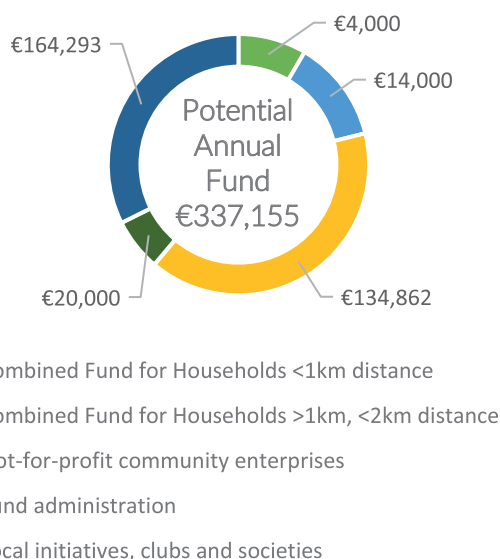
If consented the proposed Coumnagappul wind farm will require an investment of approximately €88 million¹ euro and will provide sustainable, low carbon energy generation infrastructure to meet Ireland's growing demand. The development benefits to the local community would include significant investment in local infrastructure and electrical systems, local job creation, and a contribution of approximately €21 million² in Waterford City & County Council rates over the proposed project's lifetime. The project could also generate enough green electricity to power over 40,137³ average Irish homes.

If consented the Coumnagappul wind farm will also provide a community fund calculated in accordance with the Renewable Electricity Support Scheme (RESS) Terms and Conditions, €2 per Mega Watt hour of electricity produced by the project. This is to be made available to the local community for the duration of the RESS (15 years). The average capacity factor of wind energy projects in Ireland is 28.3% (SEAI, 2019). Assuming this efficiency, and an estimated project capacity of 68 Mega Watts, a community benefit fund would amount to an average of €337,155 per annum. The actual fund will vary around this average from year to year, depending on each year's wind conditions. Wind measurements at the Study Area suggest that the proposed Coumnagappul project could be capable of achieving an above average capacity factor, and therefore a larger community fund.

EMPower strongly believe that the communities in which we propose our projects should benefit most from any associated fund. We welcome any suggestions from the Coumnagappul community on how this fund could best be allocated or ideas for suitable local projects that could be supported under this initiative.

This fund is proposed to be divided as per the illustration below. An annual minimum payment of €1,000 will be provided to each household within 1 kilometer of any proposed Coumnagappul wind turbine. An annual minimum payment of €500 will be provided to each household located between 1 kilometer and 2 kilometers of any final turbine position. 40% of the fund, amounting to approximately €134,862 per year would be allocated to not-for-profit community enterprises, with an emphasis on low-carbon initiatives. The remainder of the fund would be directed towards local clubs, societies, admin and other initiatives. We welcome any suggestions from the community on how a community fund could best be allocated or ideas for suitable local projects that could be supported under this initiative.

Coumnagappul Community Fund Allocation Example



€ 88 million¹

Investment in Irish infrastructure

€ 5 million

Total Community Fund Contribution

€ 21 million²

Project Lifetime Approximate Contribution In County Council Rates

1 – Example for 10 Turbine project with a capacity factor of 68 MW

2 – Estimated €8,000 per mega watt installed for 40 year project lifespan

3 – Commission for Regulation of Utilities – 4,200 Kw/h of electricity per average household



Contact Us

We welcome conversation, engagement and interaction with you on any aspect of how we propose to progress the Coumnagappul Wind Farm project and particularly on how we communicate project information to you. If you would like to chat about this proposed project further please contact us via any of the below means.

To supplement this project's information process, we have compiled a dedicated online Community Consultation Exhibition. This is available to view at www.innovision.ie/Coumnagappul and contains much more project design detail including an interactive visual representation of how the project would look if built out from numerous vantage points surrounding the proposed projects Study Area.

Website : www.coumnagappulwindfarm.ie

Email : coumnagappul@empower-re.ie

Phone : 01 588 0178

Write : EMPower, Portview House, Fifth Floor, Thorncastle St., Dublin 4, D04 V9Y9.

