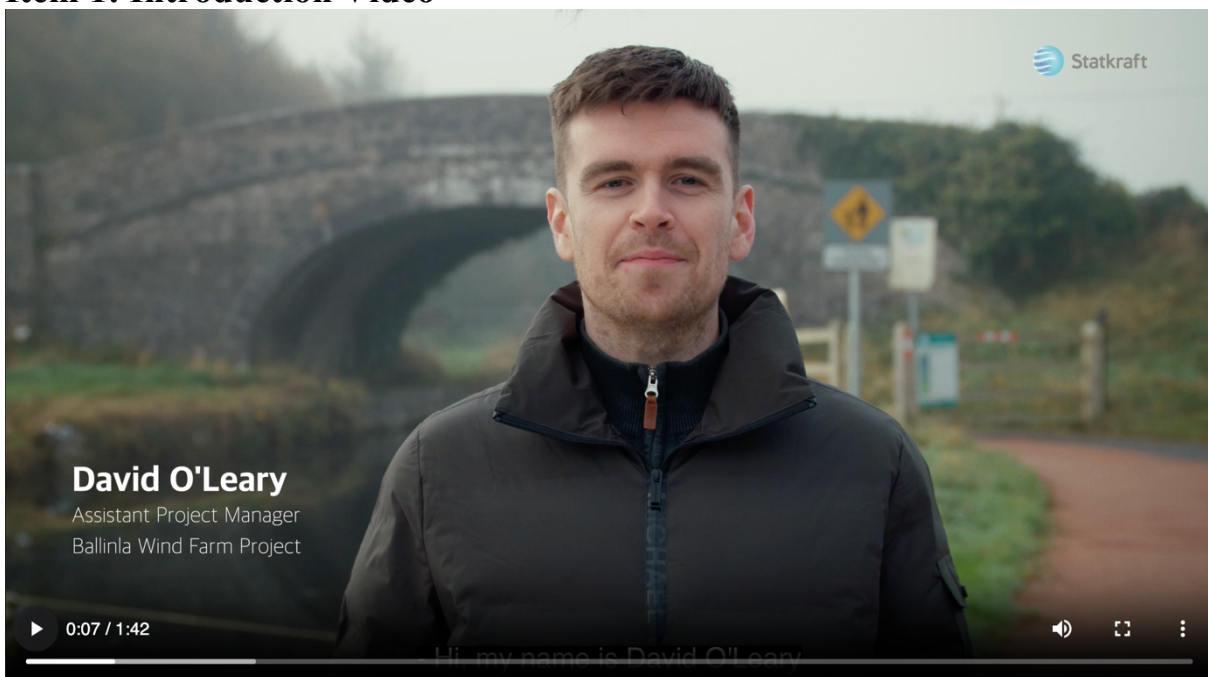


# Ballina Wind Farm – Virtual Consultation Room Content



## Item 1: Introduction Video



The video can be watched on this link: <https://youtu.be/wO3C5Um3yf0>

## Item 2: About Statkraft totem

### *Content:*

At Statkraft, we believe that a better, cleaner, and more sustainable world is possible to achieve and that by working together, we can avoid the worst impacts of climate change. As Europe's largest renewable energy producer, we have been making clean energy possible for almost 130 years and continue to lead the way towards a carbon-free future.

Statkraft is committed to delivering affordable renewable energy on to our grid system and working with communities to explore how these projects might work best in the local areas. We are also committed to delivering local funds to assist people and communities in a real and tangible way, making lives easier, better, and more sustainable.

## Statkraft Ireland

In Ireland since 2018, we now employ approximately 130 people across our offices in Cork and Tullamore. Our team are experts in developing, owning, and operating renewable energy projects across the technologies of onshore wind, offshore wind, solar, battery storage and grid services.

We endeavour to develop suitable and appropriate renewable energy projects that will bring long-lasting benefits, not only to our country and future generations, but also to the local communities in which they are located, to the country and to future generations.

For more information about Statkraft Ireland, please visit: [www.statkraft.ie](http://www.statkraft.ie)

### **Item 3: Project Overview and Evolution totem**

#### *Content:*

We believe this proposal has the capacity to deliver climate action while bringing very real benefits to the local area and its people.

This proposal is to develop a 7-turbine wind farm near Rhode, Co. Offaly. Under this proposal, the turbines, with a tip height of 185 metres, would be developed in two clusters. The location under consideration was initially identified following a review of areas that could allow for the development of this type. All wind energy proposals with an output of over 50MW are deemed by planning to be strategic projects given what they potentially have to offer. Therefore, submission directly to An Bord Pleanála as a Strategic Infrastructure Development (SID) application is a planning requirement for this proposal. Offaly County Council will be expected to review and actively input on any submission.

It is important to Statkraft that our projects are considered in terms of the climate challenges being addressed. It is also vital that they are appropriate for the area, suitably located and delivered as part of a just transition. In addition, these projects bring real benefits to local people and support the economic, social, and environmental sustainability of local areas.

## Project at a Glance

- 7-turbine project
- Distance to nearest turbine – over 740m \*
- Turbine heights of maximum 185m
- Over 50MW of renewable energy to the Irish electricity grid
- Associated works will include access tracks, turbine foundations and hard standing areas, drainage works, temporary site compound, grid systems services, substation, underground electrical and communications cables between turbines and an underground cable to connect the proposed project to a local substation
- Zero shadow flicker policy
- Total Community Benefit Fund of circa €3.7 million over 15 years, depending on the final design
- Annual rates payments to Cork County Council of over €825,000 over the project lifetime
- All cables underground

*\* A residential property is within this area by agreement*

It is important to Statkraft that our projects are considered in terms of the climate challenges being addressed. It is also vital that they are appropriate for the area, suitably located and delivered as part of a just transition. In addition, these projects bring real benefits to local people and support the economic, social, and environmental sustainability of local areas.

Projects like Ballinla Wind Farm enable communities to utilise their own natural resources and provide clean affordable energy solutions that reduce carbon emissions and our dependence on expensive fossil fuels.

## How has this project evolved over time?

Following our recent community engagement, further optimisation of this design was carried out. As with all our projects, local appropriateness is a fundamental consideration and the Grand Canal Way historical and recreational importance was foremost in nearly every engagement.

We have redesigned the project and increased the setback distance from the canal to the nearest turbine from 123 meters to 506 meters, an increase of 437 meters. Our design team have also optimised our turbine layout by reducing the number of turbines from 10 to 7. Despite this reduction, we are still able to achieve an output exceeding 50MW. The type of turbines selected remains unchanged, and the tip height is maintained at 185 meters.

The proposed project includes sections of Coillte property in addition to other third-party lands. If you have any queries related to Coillte, please contact [lsinfo@coillte.ie](mailto:lsinfo@coillte.ie). The design changes are set out in the following table:

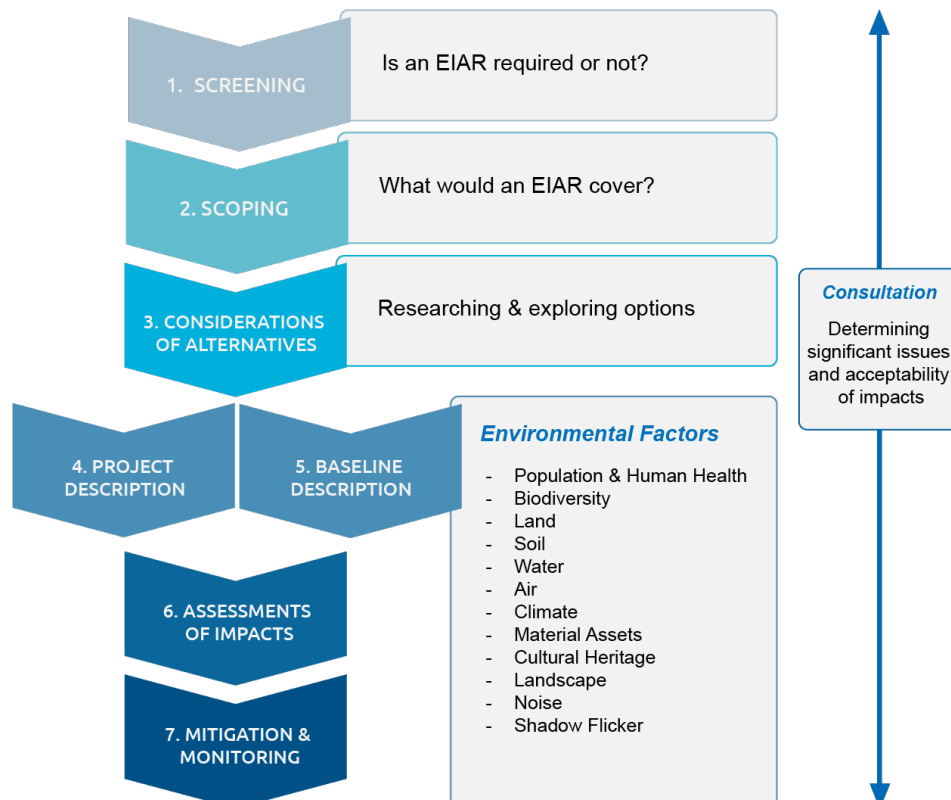
| Ballinla Project Evolution |                                |                                |                                |
|----------------------------|--------------------------------|--------------------------------|--------------------------------|
|                            | Concept Design                 | Previous Design                | Current Design                 |
| Distance to houses         | 500m                           | 740m                           | 740m                           |
| No. of turbines            | 12                             | 10                             | 7                              |
| Shadow flicker             | Eliminated - no shadow flicker | Eliminated - no shadow flicker | Eliminated - no shadow flicker |
| Turbine height             | 120m                           | 185m                           | 185m                           |
| Potential capacity         | c. 42MW                        | c. 55MW                        | c. 50MW                        |

#### Item 4: Environmental Impact totem

##### Content:

An environmental impact assessment is a planning and decision-making tool used to assess the potential positive and negative effects of proposed projects.

Impact assessments consider a wide range of factors and propose measures to mitigate the potential adverse effects of projects.



## Item 5: Need for This Project totem

*Content:*

### Sustainability

Sustainable energy can be defined as meeting the needs of the present without compromising future generations.

Average global temperatures in 2023 reached 1.45°C above pre-industrial levels – just under the 1.5°C threshold established in the Paris Agreement. The imperative is now on us all as local, national, and international communities to do what we can to limit global warming and its effects. With its abundant natural resources, Ireland can be a world leader when it comes to renewable energy integration. We are already on [the right path to decarbonising our energy system](#), but we cannot afford to lose momentum.

### Energy Security

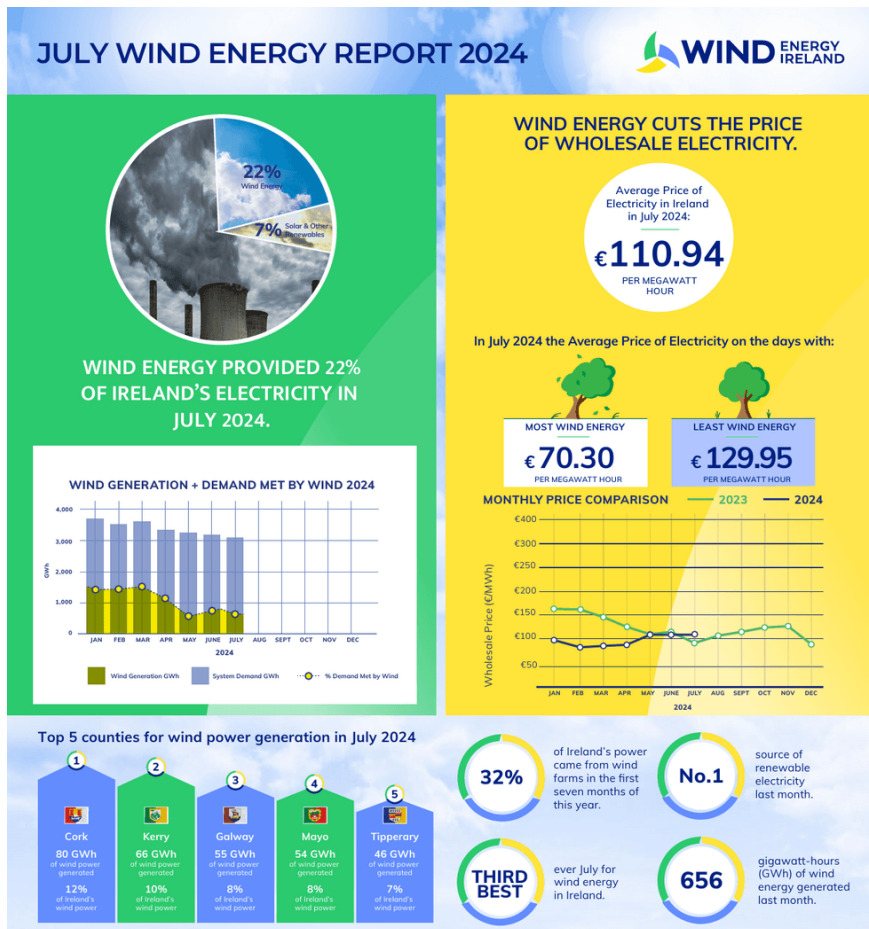
Statkraft is keenly aware of Ireland's need to secure its own energy future.

There are a number of factors which can cause supply disruption, reinforcing the importance of utilising the clean, reliable energy sources we have here in Ireland.

Renewable energy sources not only reduce our reliance on imported, polluting fossil fuels but they also ensure security of supply through climate-driven disruptions.

In 2022, geopolitical instability highlighted our dependence on fossil fuels, as we saw significant volatility across the market. Having our secure energy supply can help shield us from global market energy price increases. For example, the below illustrates the difference wind energy can make to wholesale electricity prices.

**Wind Energy Ireland's Annual Wind Energy Report for July 2024 reveals just how much wind energy can reduce the price of wholesale electricity. During the windiest periods of the month, the price of electricity per megawatt hour was 36% lower than the least windy periods.**



## Climate Action

Wind energy has the potential to produce more electricity every year than Ireland needs.

Just with the onshore wind farms we already have, wind energy in Ireland provides 34% of the electricity we use. Every time you switch on the TV or boil the kettle, a portion of that power is coming from wind turbines.

And that's without all the energy we're yet to harness from the wind that blows offshore. We have some of the best offshore wind resources in the world and over the rest of the decade, we need to build and connect a new generation of offshore wind farms to power Ireland.

As we harness more of that boundless wind energy and push fossil fuels off the electricity grid, the renewable electricity we generate will help other sectors reduce their emissions as well.

Electricity from wind energy will reduce our reliance on fossil-fuelled transport, as buses and trains are electrified and hundreds of thousands of new electric vehicles hit our roads.

Wind energy will power the heat pumps we employ in our homes and industries, replacing boilers and heaters that run on fossil fuels.



## **Item 6: Community Benefit totem**

### *Content:*

An integral part of our work with communities is the promotion of Community Benefit Funds associated with projects which have the potential to support the already brilliant work that individuals and groups are doing in their local areas to reinvigorate communities for decades to come.

## **Renewable Energy Support Scheme (RESS)**

A key feature of all our projects is the funding made available to benefit the local community. These funds allow for a significant sum of money to be used for the community's economic, environmental, social and cultural well-being. The fundamental principle of the benefit packages we roll out is that we seek to work with local people to deliver improved sustainability to their communities.

We recognise that every community is different and that it is the local people who know the area best. Decisions on what will be funded will rest with the members of a specially formed committee, allowing them to shape the strategy to maximise the benefits for the entire community.

The Community Benefit Fund is a great opportunity to play a central role in the transition to a zero-carbon, more sustainable future, and a particular focus of the funds is to support local initiatives that align with the UN Sustainable Development Goals (SDGs).

The Ballinla Wind Farm, as proposed, could bring with it funding in the region of an estimated €250,000 each year, or €3.7 million over a 15-year period.

## **What can the fund be used for?**

We are keenly aware that money on its own means nothing. What it does bring is potential. To maximise this potential, critical assessment and vision is needed. As part of our consultation process, we would like to ask everyone to consider the needs of the local area and its people. Some of the questions that might warrant reflection are:

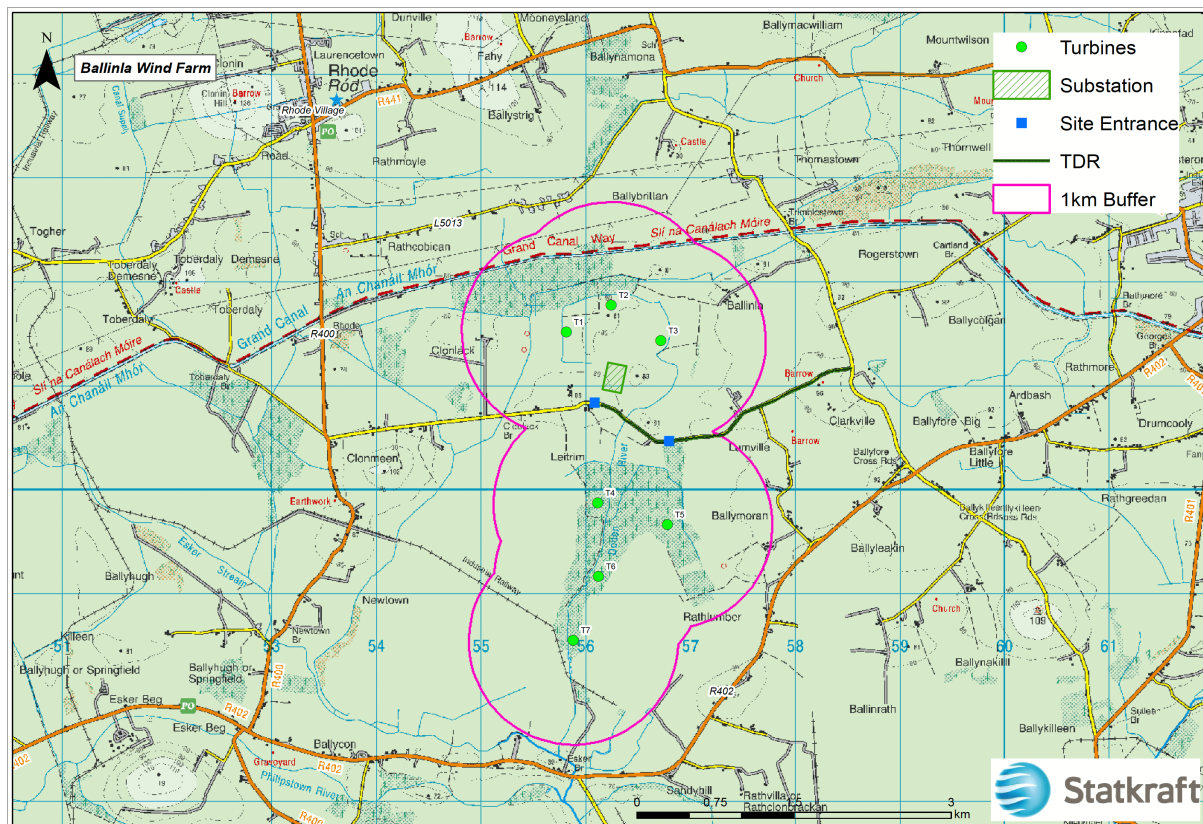
- What challenges do people in the area face?
- What are the community's strengths and how could they be improved?
- What supports do local services need?
- What issues will face the community over the coming decade?
- Are there gaps in services?
- How could investment be used to support local people?

Below are some examples of what has been considered in other areas in which we have worked and highlight could be achieved in your community:

1. Direct benefit schemes, such as near neighbour payments
2. Energy efficiency schemes for households
3. Funding for local heritage initiatives
4. Job creation and investment into local economy
5. Funding for recreation projects, such as sports clubs and local amenities
6. Support for local education schemes

## Item 6: Map totem

*Content:*



## Item 6: Brochures totem

*Content:*

Q4 2024 Project Booklet - [Open booklet in browser](#)

Q3 2024 Project Booklet - [Open booklet in browser](#)